



MTU

Ollscoil Teicneolaíochta na Mumhan
Munster Technological University



Co-funded by
the European Union

RPL in Irish Higher Education

Policy and Practice

Dr Deirdre Goggin, RPL and Work
Integrated Learning,
Munster Technological University

11/02/26

www.mtu.ie

RPL and the National Framework of Qualifications (NFQ)



- NFQ is the foundation for RPL since 2003
- Special purpose awards, micro-credentials – Access, Transfer and Progression
- Pathways – FE to HE and vice versa, professional body, returning to education, building on previous learning
- Makes the learning acquired within home, work, day to day visible
- <https://www.qqi.ie/what-we-do/the-qualifications-system/national-framework-of-qualifications>



Quality and Qualifications Ireland RPL Policies

- 2003- NQAI Policy and criteria for Access Transfer and Progression(ATP) in relation to learners for Providers of Further and Higher Education (restated in 2015)
- 2005 – NQAI Principles and Operational Guidelines for the Recognition of Prior Learning (restated in 2015)
- 2016 - Statutory Quality Assurance(QA) guidelines
- All 14 publicly funded higher education institutions (Universities, Technological Universities and Institutes of Technology) develop their own policies, procedures and processes regarding ATP and RPL
- 2015 - RPL Practitioner Network spanning all sectors

HCI RPL in Higher Education and Lifelong Learning project

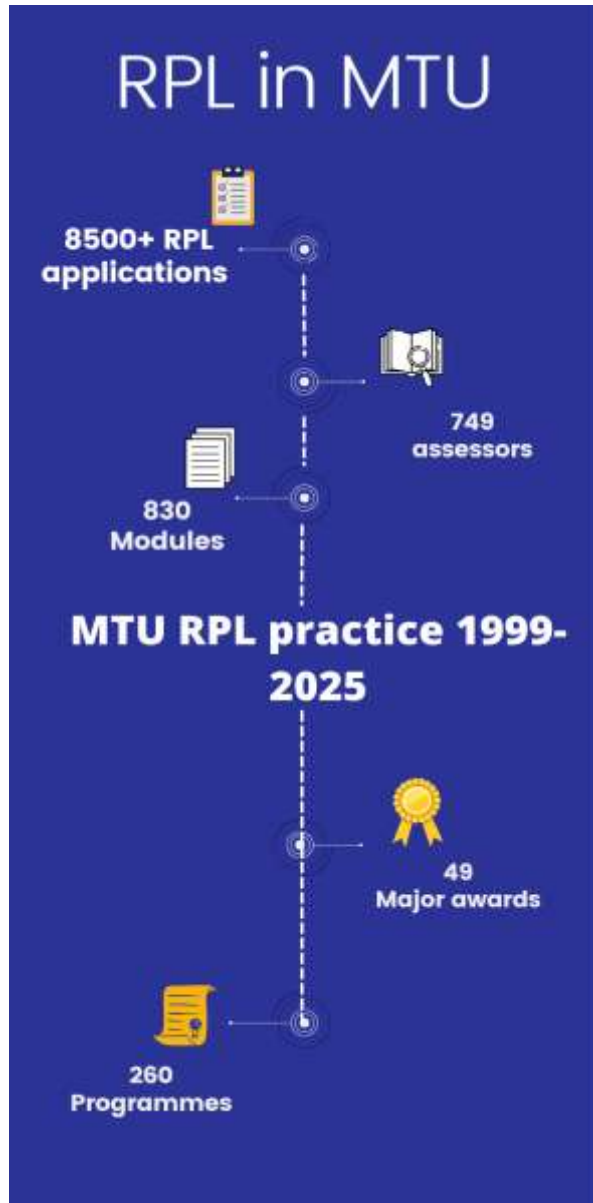
2021-2025

- National Training Fund
- 14 publicly funded HEIs (Traditional Universities, Technological Universities and Institutes of Technology)
- 4 years
- Enhance RPL within Irish Higher Education
- Consistency in practice and policy
- Varied outcomes across the different providers

MTU RPL policy, process and practice



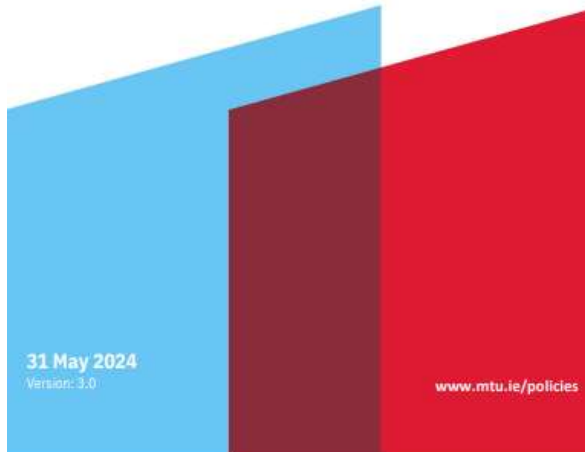
- Disciplines: Science, Engineering, Business, Humanities, Nursing, Music, Art and Nautical Studies <https://mtu.akarsoftware.com/>



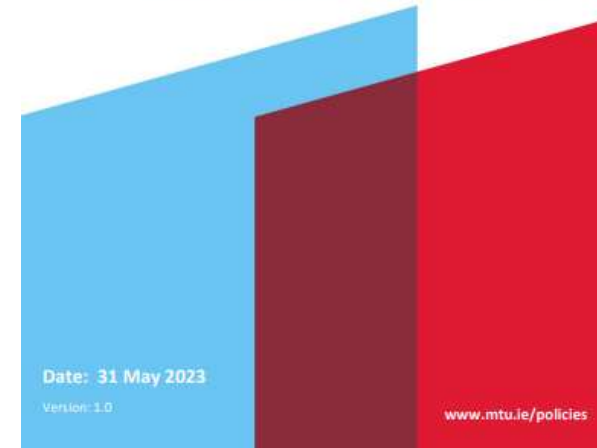
RPL policy and practice

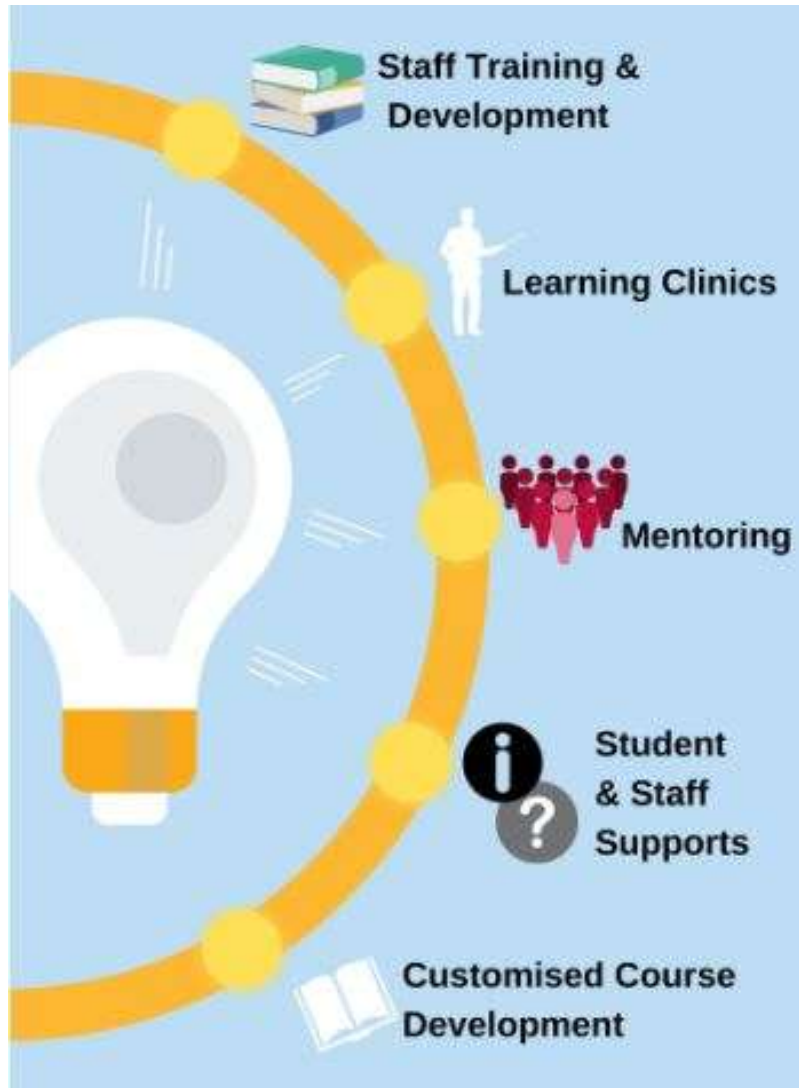
- Policy, procedures and processes since 1999
- Embedded in all the QA policies, student regulations, admissions, engagement strategy of the university
- All disciplines, in all programmes at all levels (6- 10 on NFQ)
- One policy across the university
- 6 campuses
- RPL can be used for
 - Non- standard entry
 - Advanced entry beyond year 1
 - Module exemptions
 - Full academic awards
- No limit to the recognition of informal and non-formal learning

University Policies and Procedures



- RPL Procedures**
1. Prior Formal Learning
 2. Prior Informal/Non-Formal Learning





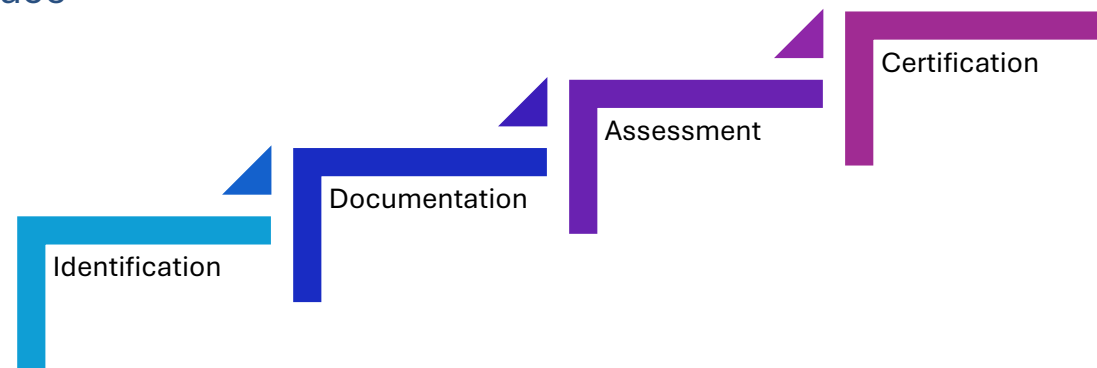
RPL activities are underpinned by the existence of the National Framework of Qualifications and ATP policies and procedures

Staff – curriculum development, mentoring, assessment, new programme development, micro-credentials

Institution- maintaining the standard, providing structure and reassurance, establish the policies and procedures, consistency in practice

Individual- informs on where their learning sits, the opportunities for further and future development

Enterprise – enables meaningful conversations, responsive to changing workplace environment, regulatory requirements, business needs, global marketplace



Staff Training and Development

- A 10 credit module as part of the Masters in Teaching and Learning in Higher Education
- RPL : Policy, practice, pedagogy
- Higher Education and Vocational Education and Training
- Ad hoc training on policy, procedures, application content and assessment, customised courses

Learning Clinics

- Outreach into industry and enterprise
- Enhance awareness of courses and RPL
- Opportunity to explore possibilities
- Customised course developments
- Inform curriculum development

Mentoring , Student and Staff Supports

- Dedicated mentoring support for RPL
 - Non standard entry
 - Advanced entry
 - Module exemptions
 - Full academic awards
- Resources
 - <https://www.cit.ie/rpl>

Customised Course Developments

- Specific learning and development needs
- Co-creation
- Co-delivery
- Encompasses RPL and Work Integrated Learning
- At a point most appropriate on the NFQ

Scholarship in validation



Transnational Competence Framework for Volunteering
Valuing learning gained through volunteering , supporting validation
Three competence levels



Developing, describing and designing non formal adult education courses in keeping with ECTS to enable greater understanding of the learning gained which may enable greater recognition and validation

<https://www.aligning-nfae.eu/>

Some examples of RPL from MTU.....

- BSc, HDip and MSc Cloud computing
 - RPL entry and exemptions – programme development
- Certificate in Leadership Development
 - RPL for entry – programme development
- BA in International Business with Aviation Studies
 - 120 ECTS RPL application and exemptions – programme development
- BSc in Nautical Science
 - Merchant Navy professional qualification - exemptions



Contact details:

Deirdre.Goggin@mtu.ie

